



Cambridge IGCSE™

CANDIDATE
NAME

CENTRE
NUMBER

| | | | | |
|--|--|--|--|--|
| | | | | |
|--|--|--|--|--|

CANDIDATE
NUMBER

| | | | |
|--|--|--|--|
| | | | |
|--|--|--|--|



CO-ORDINATED SCIENCES

0654/43

Paper 4 Theory (Extended)

May/June 2021

2 hours

You must answer on the question paper.

No additional materials are needed.

INSTRUCTIONS

- Answer **all** questions.
- Use a black or dark blue pen. You may use an HB pencil for any diagrams or graphs.
- Write your name, centre number and candidate number in the boxes at the top of the page.
- Write your answer to each question in the space provided.
- Do **not** use an erasable pen or correction fluid.
- Do **not** write on any bar codes.
- You may use a calculator.
- You should show all your working and use appropriate units.

INFORMATION

- The total mark for this paper is 120.
- The number of marks for each question or part question is shown in brackets [].
- The Periodic Table is printed in the question paper.

This document has **28** pages. Any blank pages are indicated.

1 (a) Fig. 1.1 is a photograph of an insect-pollinated flower.



Fig. 1.1

(i) Identify the parts labelled **A**, **B** and **C** in Fig. 1.1.

A

B

C [3]

(ii) Describe two **visible** pieces of evidence from Fig. 1.1 that suggest this is an insect-pollinated flower.

1

.....

2

..... [2]

(iii) Describe two ways the pollen from the flower in Fig. 1.1 would be different from pollen in a wind-pollinated flower.

1

2 [2]

(b) Pollen contains the male gametes.

State one way the chromosome number in the nuclei of a gamete is different from that of a zygote.

..... [1]

(c) A zygote is produced after fertilisation.

State where fertilisation occurs in a plant.

..... [1]

(d) Many plants are capable of both asexual and sexual reproduction.

Complete Table 1.1 to show the **disadvantages** of asexual and sexual reproduction in plants by placing ticks (✓) in the correct boxes.

One has been done for you.

Table 1.1

| | less genetic diversity | more energy is used finding a partner | no or less evolution | usually takes a longer length of time |
|---------|------------------------|---------------------------------------|----------------------|---------------------------------------|
| asexual | ✓ | | | |
| sexual | | | | |

[2]

[Total: 11]

2 Hydrogen peroxide solution slowly decomposes to make water and oxygen gas.

(a) (i) Write the word equation for this reaction.

..... [1]

(ii) Manganese(IV) oxide is a catalyst for this reaction.

Describe what is meant by a catalyst.

.....

.....

..... [2]

(b) A student investigates the decomposition of hydrogen peroxide solution.

Fig. 2.1 shows the student's experiment.

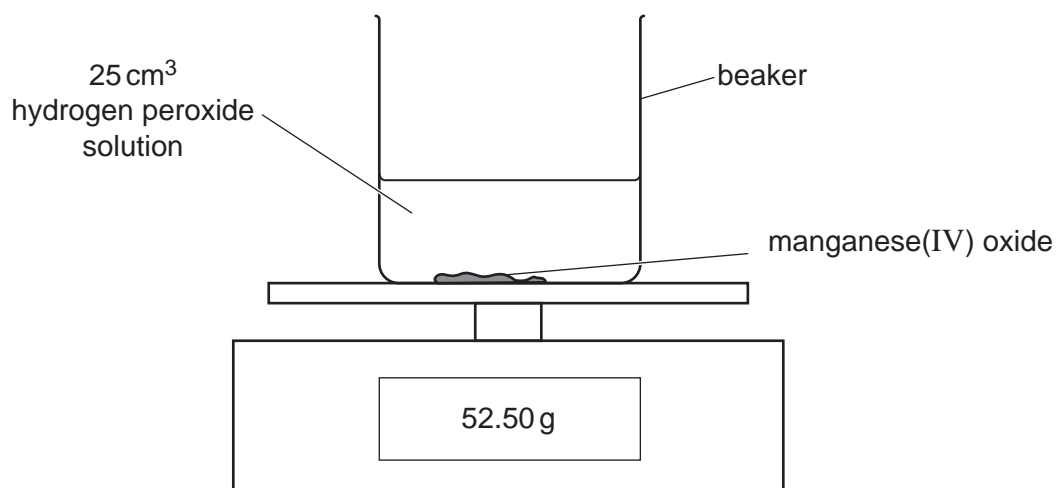


Fig. 2.1

Fig. 2.2 shows a graph of the student's results.

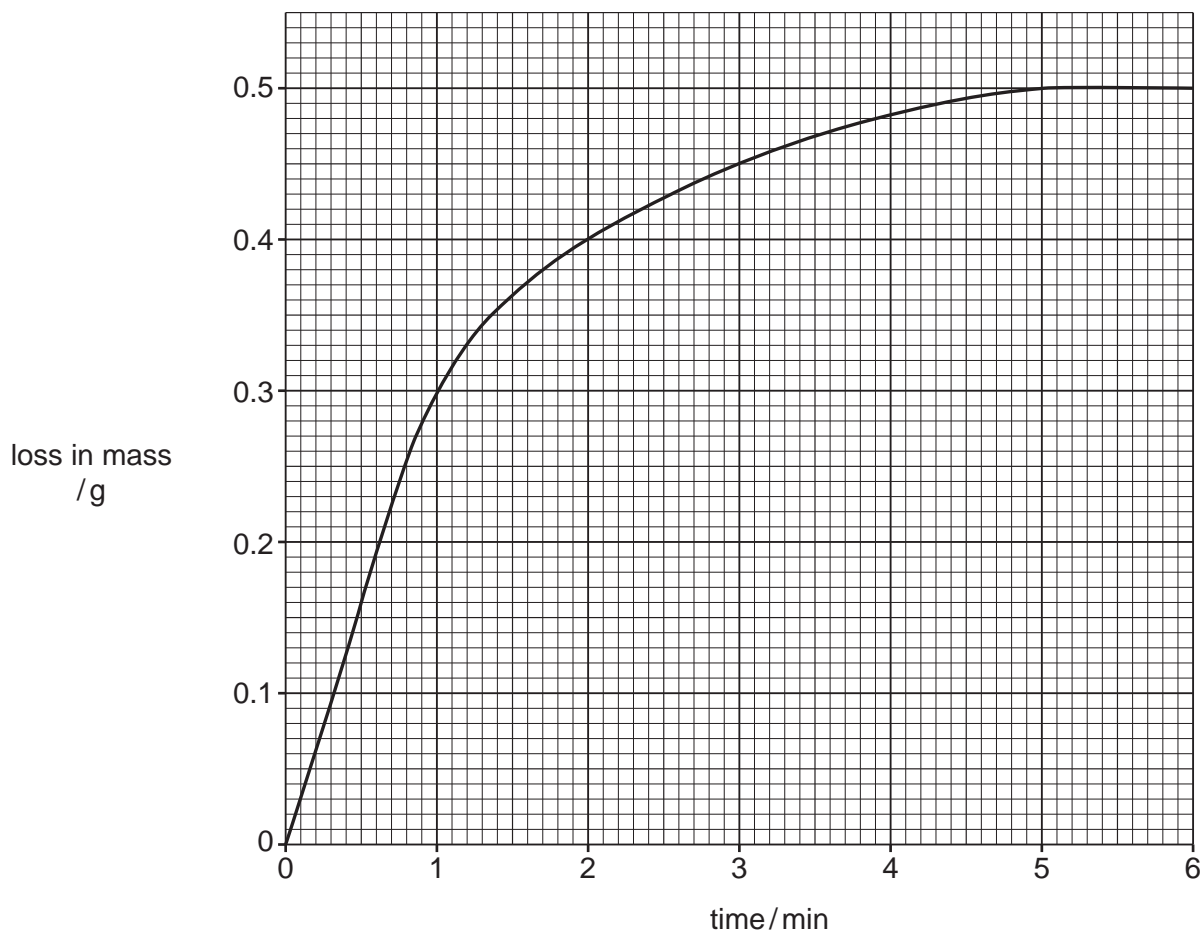


Fig. 2.2

(i) State the loss in mass after 2 minutes.

loss in mass = g [1]

(ii) State what happens to the rate of the reaction between 1 and 4 minutes.

..... [1]

(c) The student wants to increase the rate of the decomposition of the hydrogen peroxide solution.

He does not want to change the **catalyst** or the **volume** of the hydrogen peroxide solution.

Describe **and** explain **one** way that the student can use to increase the rate of the reaction.

Explain your answer in terms of collisions between particles.

.....

..... [3]

[Total: 8]

- 3 Fig. 3.1 shows a kettle and the label on the bottom of the kettle. The kettle contains a heating element inside its base.

The kettle is made of white plastic.

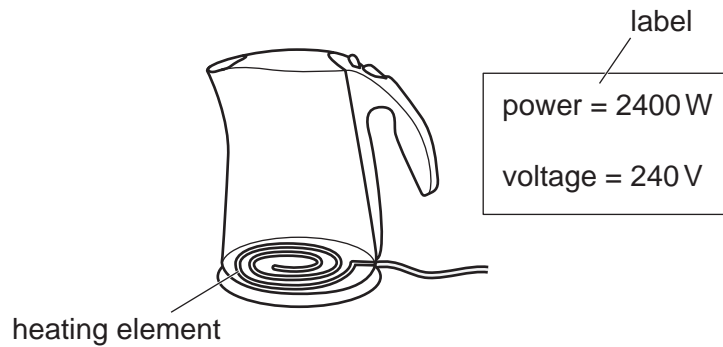


Fig. 3.1

- (a) Explain, in terms of thermal energy transfer, why the kettle is:

- (i) made of plastic.

.....
 [1]

- (ii) white.

.....
 [1]

- (b) (i) The kettle is filled with cold water and switched on.

Describe, in terms of density changes, how the heating element heats up all of the water.

.....

 [3]

- (ii) Calculate the current in the heating element.

State the unit for your answer.

current = unit = [3]

7

(iii) Show that the resistance of the heating element is $24\ \Omega$.

[1]

(iv) The heating element is connected in parallel with a $12\ \Omega$ resistor.

Calculate the combined resistance of the heating element and the resistor.

resistance = Ω [2]

[Total: 11]

4 (a) Table 4.1 shows the forest area in two different continents, **A** and **B**, in 1990 and 2010.

Table 4.1

| continent | total forest area/thousand km ² | |
|-----------|--|---------|
| | in 1990 | in 2010 |
| A | 9460 | 8640 |
| B | 9890 | 10050 |

(i) Compare the total forest area for continents **A** and **B** between the years 1990 and 2010.

Use comparative data from Table 4.1 in your answer.

.....

.....

.....

.....

.....

.....

..... [3]

(ii) The change to the total forest area for continent **A** may affect the animals living in the forest.

Describe three ways the animals may be affected.

1

.....

2

.....

3

.....

[3]

(iii) Explain two ways that deforestation causes the carbon dioxide concentration in the atmosphere to increase.

1

.....

2

.....

[2]

(b) Plants in a forest will compete for light.

Auxin is a hormone that is responsible for the chemical control of shoot growth.

Complete the sentences to describe how auxin causes shoots to grow towards the light.

Auxin is made in the shoot and moves and spreads through the plant.

It collects on the side of the shoot.

Auxin stimulates cellso this side will grow more.

This results in the shoot bending towards the light.

This growth response to light is called

[4]

[Total: 12]

5 Different methods can be used to extract metals from their ores.

The method used depends on how reactive each metal is.

(a) Draw a line to link the **reactivity** of each metal to the **method of extracting** it from the ore.

Use each method **only once**.

| reactivity of metal | method of extracting |
|---------------------------------|--|
| reactive metal e.g. aluminium | extracted from the ground as the metal |
| less reactive metal e.g. copper | heating with carbon |
| very unreactive metal e.g. gold | electrolysis |

[2]

(b) Fig. 5.1 shows a blast furnace. It is used to extract iron from iron ore.

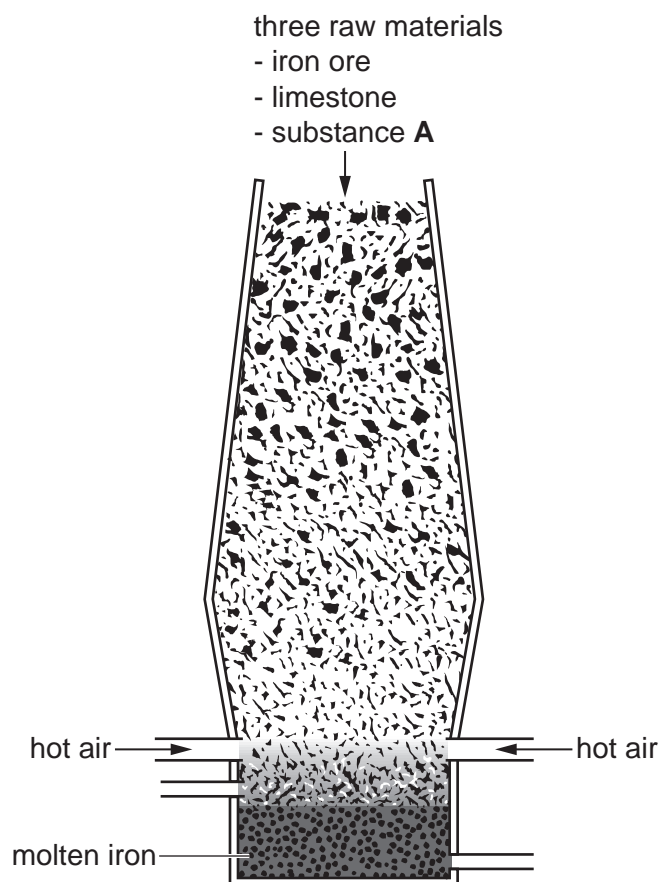


Fig. 5.1

- (i) State the name of an ore that contains iron.

Choose from the list.

bauxite
hematite
malachite
marble

..... [1]

- (ii) Three raw materials are added to the top of the blast furnace.

These are iron ore, limestone and substance **A**.

State the name of substance **A**.

..... [1]

- (iii) Inside the blast furnace, iron ore, Fe_2O_3 , reacts with carbon monoxide, CO .

Iron, Fe , and carbon dioxide, CO_2 , are made.

Write the balanced symbol equation for this reaction.

..... [2]

- (iv) In the blast furnace iron(III) ions, Fe^{3+} , are changed into iron.

The balanced half-equation is shown.



Iron(III) ions gain electrons.

State the name of the process when electrons are gained.

..... [1]

- (v) Iron(III) ions, Fe^{3+} , react with sulfate ions, SO_4^{2-} to make iron(III) sulfate.

Determine the formula of iron(III) sulfate.

..... [1]

12

(c) Calcium carbonate, CaCO_3 , is used to remove acidic impurities in the blast furnace.

Calcium carbonate thermally decomposes to make calcium oxide and carbon dioxide.

The balanced symbol equation for the reaction is shown.



1000 kg of calcium carbonate are heated.

Calculate the mass of carbon dioxide gas made.

Show your working.

[A_r : C, 12; Ca, 40; O, 16]

mass of carbon dioxide gas = kg [2]

[Total: 10]

6 (a) A sprinter runs a 200m race in 25 seconds.

(i) Calculate the average speed of the sprinter.

average speed = m/s [2]

(ii) The sprinter has a mass of 90 kg.

Calculate the average kinetic energy of the sprinter.

average kinetic energy = J [2]

(b) Fig. 6.1 shows the forces acting on the sprinter during the race.

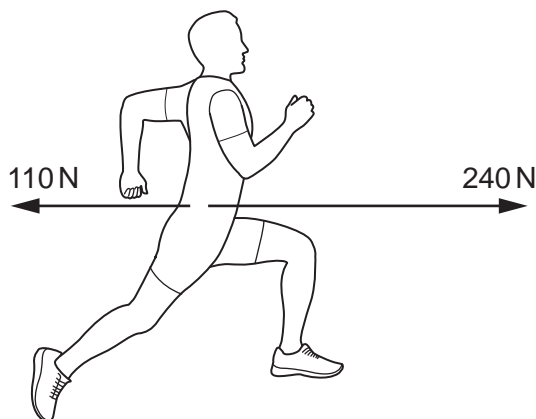


Fig. 6.1

(i) Calculate the resultant force acting on the sprinter.

resultant force = N [1]

(ii) Describe how these forces would change the motion of the sprinter.

.....

.....

.....

..... [2]

[Total: 7]

7 Fig. 7.1 is a diagram of a cross-section through human skin.

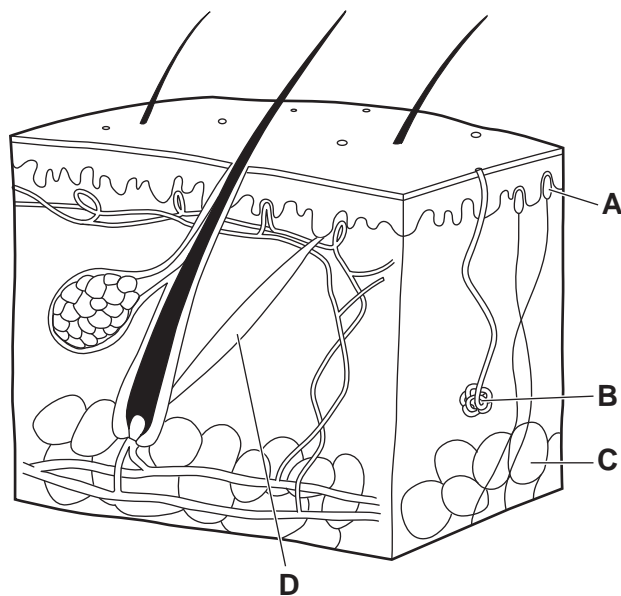


Fig. 7.1

(a) The boxes on the left show the letters in Fig. 7.1.

The boxes on the right show the names of some of the parts of the skin.

Draw lines to link each letter in Fig. 7.1 to its correct name.

| letter in Fig. 7.1 | name |
|--------------------|---------------------|
| A | fatty tissue |
| B | hair erector muscle |
| C | receptor |
| D | sweat gland |

[3]

(b) Fig. 7.2 shows blood vessels in the skin during warm conditions.

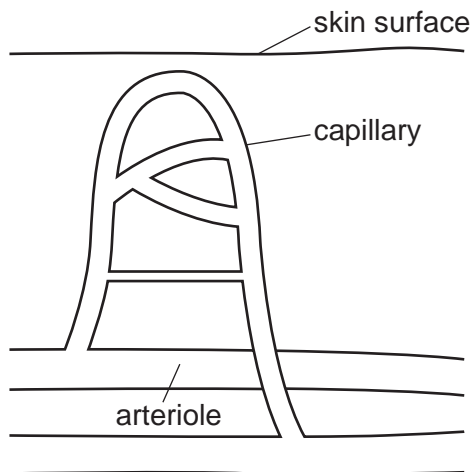


Fig. 7.2

(i) Describe the role of arterioles and capillaries in temperature control when the body gets too hot. Include the name of the process in your answer.

.....

.....

.....

.....

.....

..... [3]

(ii) State one response by the body to a decrease in internal body temperature.

..... [1]

(iii) Name the term used to describe the mechanism used to return internal body temperature to a normal level.

..... [1]

(c) Adrenaline is a hormone that can also affect the skin and blood flow.

Describe two ways that adrenaline affects the blood.

1

.....

2

.....

[2]

[Total: 10]

[Turn over

8 The fractional distillation of petroleum makes useful fractions.

Three of the fractions made are petrol, fuel oil and refinery gas.

Refinery gas contains ethane, C_2H_6 .

(a) Draw the structure of an ethane molecule.

Show all the covalent bonds.

[1]

(b) Ethane burns in oxygen to make carbon dioxide and water.

The balanced symbol equation is shown.



The reaction is **exothermic**.

Use the axes shown in Fig. 8.1 to draw and label the energy level diagram for this reaction.

Label:

- the energy of the reactants and the products
- the energy change in the reaction
- the activation energy of the reaction.

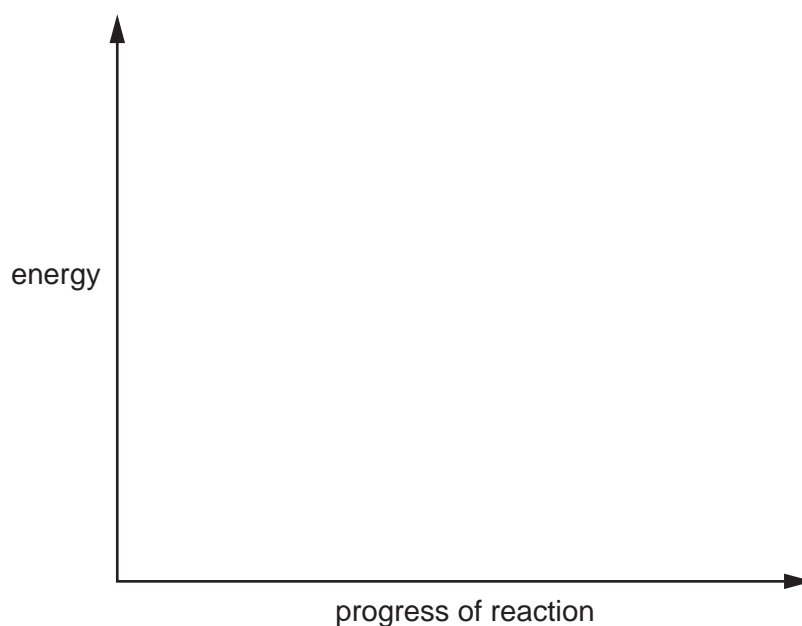


Fig. 8.1

[3]

- (c) Fractional distillation makes too much fuel oil and not enough petrol.

Cracking is a process that breaks large molecules into smaller molecules.

Some fractions are cracked.

Suggest why cracking is useful.

.....

 [2]

- (d) During cracking, dodecane, $C_{12}H_{26}$, can make octane, C_8H_{18} , and ethene, C_2H_4 .

Write the balanced symbol equation for this reaction.

..... [2]

- (e) Ethene is changed into poly(ethene) in a polymerisation reaction.

Polymerisation changes many small molecules into larger long chain molecules.



State the name of the small molecules used in polymerisation.

Choose from the list.

alkane
monomer
nylon
polymer

..... [1]

(f) Fig. 8.2 shows the structure of a small molecule called propene.

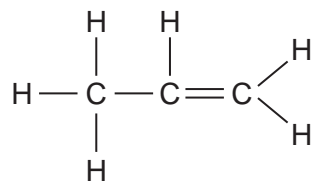


Fig. 8.2

Propene is an alkene. It is unsaturated.

Explain why propene is unsaturated.

..... [1]

(g) Table 8.1 shows the structures of some small molecules and long chain molecules.

Complete Table 8.1.

Table 8.1

| name of small molecule | structure of small molecule | structure of long chain molecule |
|------------------------|--|--|
| ethene | $ \begin{array}{c} \text{H} \quad \text{H} \\ \diagdown \quad \diagup \\ \text{C}=\text{C} \\ \diagup \quad \diagdown \\ \text{H} \quad \text{H} \end{array} $ | $ \left[\begin{array}{cc} \text{H} & \text{H} \\ & \\ -\text{C} & -\text{C}- \\ & \\ \text{H} & \text{H} \end{array} \right]_n $ |
| propene | $ \begin{array}{c} \text{H} \quad \text{H} \quad \text{H} \\ \diagdown \quad \diagup \quad \diagdown \\ \text{C}=\text{C} \quad \text{C} \\ \diagup \quad \diagdown \quad \diagup \quad \diagdown \\ \text{H} \quad \text{H} \quad \text{H} \quad \text{H} \end{array} $ | |
| chloroethene | | $ \left[\begin{array}{cc} \text{H} & \text{Cl} \\ & \\ -\text{C} & -\text{C}- \\ & \\ \text{H} & \text{H} \end{array} \right]_n $ |

[2]

[Total: 12]

- 9 (a) Fig. 9.1 represents a straight piece of wire carrying a current passing through a sheet of paper.

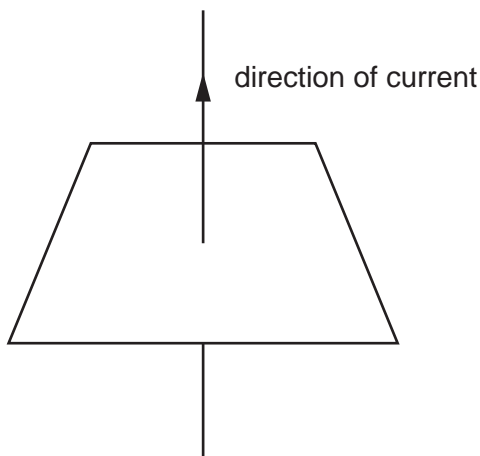


Fig. 9.1

- (i) On Fig. 9.1, draw **two** field lines to show the shape and direction of the magnetic field around the wire. [2]
- (ii) State what effect reversing the direction of the current would have on the magnetic field.

..... [1]

..... [1]

- (b) Fig. 9.2 shows the wire placed into the magnetic field of a permanent magnet.

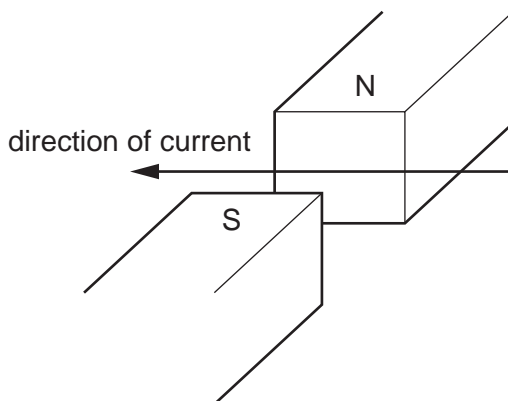


Fig. 9.2

- (i) State the direction of the force acting on the wire. [1]
- [1]
- (ii) Suggest two changes that would increase the size of the force acting on the wire.

1

.....

2

.....

(c) Fig. 9.3 shows an electric motor.

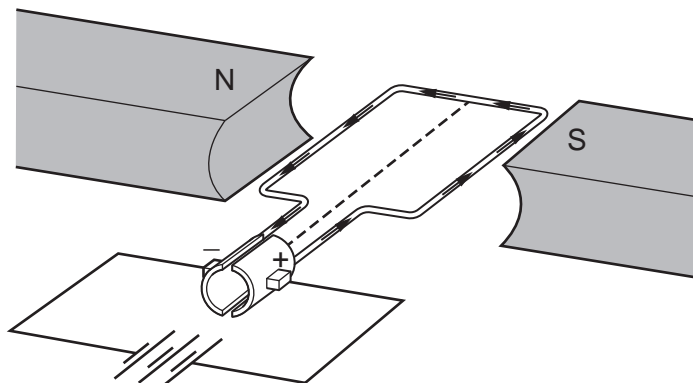


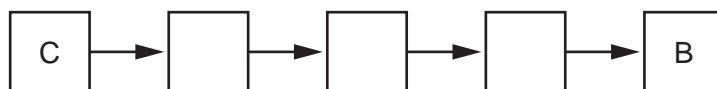
Fig. 9.3

(i) The following statements explain what causes the coil in Fig. 9.3 to rotate.

The statements are in the wrong order.

- A A current flows through the coil.
- B The coil experiences a force and starts to spin.
- C The power supply applies a potential difference across the coil.
- D This causes a magnetic field to be induced around the coil.
- E This interacts with the permanent magnetic field.

Arrange the statements into the correct order.



[2]

(ii) On Fig 9.3, label the split-ring commutator with a cross (X).

[1]

(iii) Describe how the split-ring commutator allows the coil to keep on turning.

.....
 [1]

- (d) A simple a.c. generator produces an alternating voltage.

Fig 9.4 shows how the voltage from the generator varies with time in the form of a wave.

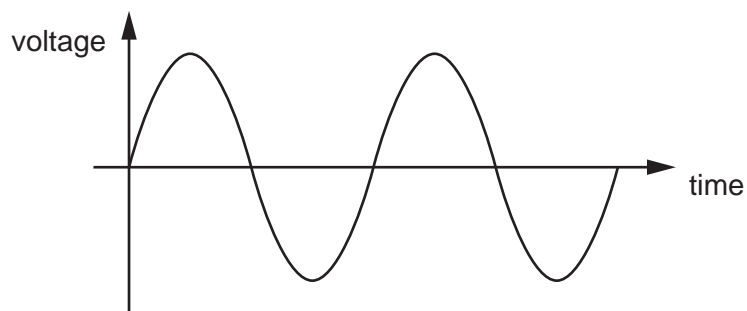


Fig. 9.4

- (i) On Fig. 9.4, draw a double headed arrow (\longleftrightarrow) to show the time taken for the coil in the generator to complete one full rotation. [1]
- (ii) The size of the voltage from the generator is indicated by the amplitude of the wave in Fig. 9.4.

On Fig. 9.4, draw the voltage output of the generator with a smaller voltage. [1]

[Total: 12]

- 10 (a) The percentage of oxygen in inspired air, in expired air when resting and in expired air during exercise is different.

Table 10.1 shows these differences.

Table 10.1

| percentage of oxygen | | |
|----------------------|-----------------------------|--------------------------------|
| in inspired air | in expired air when resting | in expired air during exercise |
| 20 | 16 | 14 |

The percentage of oxygen in expired air when resting and expired air during exercise is different.

- (i) Calculate the difference.

.....% [1]

- (ii) Explain this difference.

.....

 [2]

- (b) Exercise increases the rate of breathing.

Describe one other effect of exercise on the pattern of breathing.

.....
 [1]

- (c) An increase in the concentration levels of one gas in the blood causes the increase in breathing rate.

Name this gas.

..... [1]

- (d) Alveoli is the gas exchange surface in humans.

Name two structures that air must pass through before it reaches the alveoli during inspiration.

1
 2

[2]

[Total: 7]

(d) Potassium metal reacts with the non-metal bromine to form potassium bromide.

Potassium bromide is an ionic compound.

Describe how metallic and non-metallic elements form ionic bonds.

.....

.....

.....

..... [3]

(e) The electronic structure of carbon is 2.4.

The electronic structure of oxygen is 2.6.

The atoms in a molecule of carbon dioxide, CO_2 , are held together by covalent bonds.

Draw the dot-and-cross diagram to show the bonding in carbon dioxide.

You only need to include the outer shell electrons.

[2]

[Total: 10]

12 Fig. 12.1 shows the arrangement of molecules in samples of a solid, a liquid and a gas.

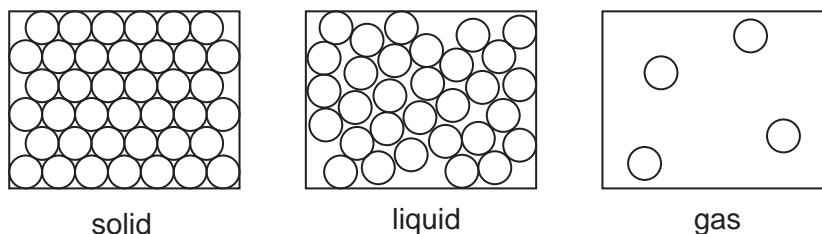


Fig. 12.1

(a) Some statements about the structure and properties of matter are given.

Place a tick (✓) next to all of the statements that describe the structure or properties of a **solid**.

- There are no forces between molecules.
- Forces between molecules are strong.
- It has a fixed volume.
- It can be compressed.
- Molecules can only vibrate.
- Molecules are free to move.

[3]

(b) Fig. 12.2 shows a syringe filled with a gas similar to the sample shown in Fig. 12.1.

The syringe is attached to a pressure gauge which measures the pressure of the gas.

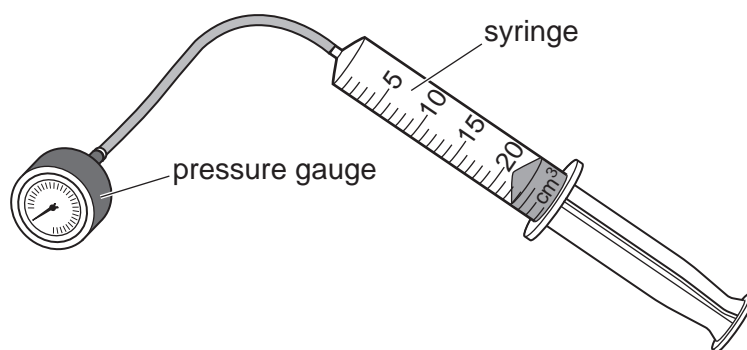


Fig. 12.2

Describe what causes the pressure in the sample of gas in terms of molecular motion.

.....

.....

.....

..... [2]

- (c) A student conducts an investigation into how the pressure of the gas changes with volume. The temperature of the gas remains constant.

Fig. 12.3 shows the results of the student's investigation.

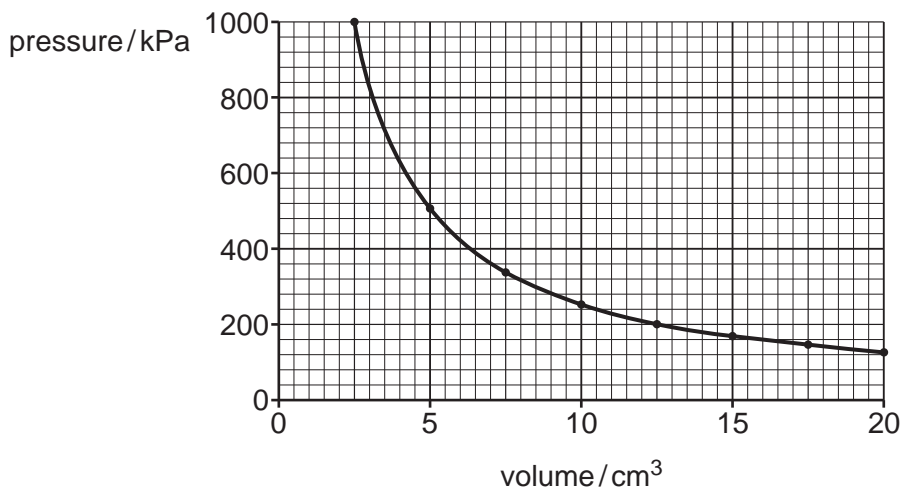


Fig. 12.3

- (i) Use Fig. 12.3 to determine the volume of the sample of gas when the pressure is 500 kPa.

volume = cm³ [1]

- (ii) The mass of the sample of gas is 2.45 g.

Calculate the density of the sample of gas when the pressure is 500 kPa.

density = g/cm³ [2]

- (d) Explain why increasing the temperature of a sample of gas, while keeping the volume constant, causes an increase in pressure.

.....

 [2]

[Total: 10]

BLANK PAGE

Permission to reproduce items where third-party owned material protected by copyright is included has been sought and cleared where possible. Every reasonable effort has been made by the publisher (UCLES) to trace copyright holders, but if any items requiring clearance have unwittingly been included, the publisher will be pleased to make amends at the earliest possible opportunity.

To avoid the issue of disclosure of answer-related information to candidates, all copyright acknowledgements are reproduced online in the Cambridge Assessment International Education Copyright Acknowledgements Booklet. This is produced for each series of examinations and is freely available to download at www.cambridgeinternational.org after the live examination series.

Cambridge Assessment International Education is part of the Cambridge Assessment Group. Cambridge Assessment is the brand name of the University of Cambridge Local Examinations Syndicate (UCLES), which itself is a department of the University of Cambridge.

The Periodic Table of Elements

| | | Group | | | | | | | |
|----------------------------|-----------------------------|--|---------------------------------|-------------------------------|-------------------------------|-------------------------------|-------------------------------|-------------------------------|--------------------------------|
| I | II | III | IV | V | VI | VII | VIII | | |
| 3 Li lithium 7 | 4 Be beryllium 9 | 1 H hydrogen 1 | 5 B boron 11 | 6 C carbon 12 | 7 N nitrogen 14 | 8 O oxygen 16 | 9 F fluorine 19 | 10 Ne neon 20 | |
| 11 Na sodium 23 | 12 Mg magnesium 24 | Key atomic number atomic symbol name relative atomic mass | | 13 Al aluminium 27 | 14 Si silicon 28 | 15 P phosphorus 31 | 16 S sulfur 32 | 17 Cl chlorine 35.5 | 18 Ar argon 40 |
| 19 K potassium 39 | 20 Ca calcium 40 | 21 Sc scandium 45 | 22 Ti titanium 48 | 23 V vanadium 51 | 24 Cr chromium 52 | 25 Mn manganese 55 | 26 Fe iron 56 | 27 Co cobalt 59 | 28 Ni nickel 59 |
| 37 Rb rubidium 85 | 38 Sr strontium 88 | 39 Y yttrium 89 | 40 Zr zirconium 91 | 41 Nb niobium 93 | 42 Mo molybdenum 96 | 43 Tc technetium — | 44 Ru ruthenium 101 | 45 Rh rhodium 103 | 46 Pd palladium 106 |
| 55 Cs caesium 133 | 56 Ba barium 137 | 57–71 lanthanoids | 72 Hf hafnium 178 | 73 Ta tantalum 181 | 74 W tungsten 184 | 75 Re rhenium 186 | 76 Os osmium 190 | 77 Ir iridium 192 | 78 Pt platinum 195 |
| 87 Fr francium — | 88 Ra radium — | 89–103 actinoids | 104 Rf rutherfordium — | 105 Db dubnium — | 106 Sg seaborgium — | 107 Bh bohrium — | 108 Hs hassium — | 109 Mt meitnerium — | 110 Ds darmstadtium — |
| | | | 111 Rg roentgenium — | 112 Cn copernicium — | 113 Nh nihonium — | 114 Fl flerovium — | 115 Mc moscovium — | 116 Lv livermorium — | 117 Ts tennessine — |
| | | | 118 Og oganesson — | 119 Uu unbinilium — | 120 Uub unbinilium — | 121 Uut unbinilium — | 122 Uuq unbinilium — | 123 Uuq unbinilium — | 124 Uuq unbinilium — |
| | | | 125 Uup unbinilium — | 126 Uuq unbinilium — | 127 Uuq unbinilium — | 128 Uuq unbinilium — | 129 Uuq unbinilium — | 130 Uuq unbinilium — | 131 Uuq unbinilium — |
| | | | 132 Uuq unbinilium — | 133 Uuq unbinilium — | 134 Uuq unbinilium — | 135 Uuq unbinilium — | 136 Uuq unbinilium — | 137 Uuq unbinilium — | 138 Uuq unbinilium — |
| | | | 139 Uuq unbinilium — | 140 Uuq unbinilium — | 141 Uuq unbinilium — | 142 Uuq unbinilium — | 143 Uuq unbinilium — | 144 Uuq unbinilium — | 145 Uuq unbinilium — |
| | | | 146 Uuq unbinilium — | 147 Uuq unbinilium — | 148 Uuq unbinilium — | 149 Uuq unbinilium — | 150 Uuq unbinilium — | 151 Uuq unbinilium — | 152 Uuq unbinilium — |
| | | | 153 Uuq unbinilium — | 154 Uuq unbinilium — | 155 Uuq unbinilium — | 156 Uuq unbinilium — | 157 Uuq unbinilium — | 158 Uuq unbinilium — | 159 Uuq unbinilium — |
| | | | 160 Uuq unbinilium — | 161 Uuq unbinilium — | 162 Uuq unbinilium — | 163 Uuq unbinilium — | 164 Uuq unbinilium — | 165 Uuq unbinilium — | 166 Uuq unbinilium — |
| | | | 167 Uuq unbinilium — | 168 Uuq unbinilium — | 169 Uuq unbinilium — | 170 Uuq unbinilium — | 171 Uuq unbinilium — | 172 Uuq unbinilium — | 173 Uuq unbinilium — |
| | | | 174 Uuq unbinilium — | 175 Uuq unbinilium — | 176 Uuq unbinilium — | 177 Uuq unbinilium — | 178 Uuq unbinilium — | 179 Uuq unbinilium — | 180 Uuq unbinilium — |
| | | | 181 Uuq unbinilium — | 182 Uuq unbinilium — | 183 Uuq unbinilium — | 184 Uuq unbinilium — | 185 Uuq unbinilium — | 186 Uuq unbinilium — | 187 Uuq unbinilium — |
| | | | 188 Uuq unbinilium — | 189 Uuq unbinilium — | 190 Uuq unbinilium — | 191 Uuq unbinilium — | 192 Uuq unbinilium — | 193 Uuq unbinilium — | 194 Uuq unbinilium — |
| | | | 195 Uuq unbinilium — | 196 Uuq unbinilium — | 197 Uuq unbinilium — | 198 Uuq unbinilium — | 199 Uuq unbinilium — | 200 Uuq unbinilium — | 201 Uuq unbinilium — |
| | | | 202 Uuq unbinilium — | 203 Uuq unbinilium — | 204 Uuq unbinilium — | 205 Uuq unbinilium — | 206 Uuq unbinilium — | 207 Uuq unbinilium — | 208 Uuq unbinilium — |
| | | | 209 Uuq unbinilium — | 210 Uuq unbinilium — | 211 Uuq unbinilium — | 212 Uuq unbinilium — | 213 Uuq unbinilium — | 214 Uuq unbinilium — | 215 Uuq unbinilium — |
| | | | 216 Uuq unbinilium — | 217 Uuq unbinilium — | 218 Uuq unbinilium — | 219 Uuq unbinilium — | 220 Uuq unbinilium — | 221 Uuq unbinilium — | 222 Uuq unbinilium — |
| | | | 223 Uuq unbinilium — | 224 Uuq unbinilium — | 225 Uuq unbinilium — | 226 Uuq unbinilium — | 227 Uuq unbinilium — | 228 Uuq unbinilium — | 229 Uuq unbinilium — |
| | | | 230 Uuq unbinilium — | 231 Uuq unbinilium — | 232 Uuq unbinilium — | 233 Uuq unbinilium — | 234 Uuq unbinilium — | 235 Uuq unbinilium — | 236 Uuq unbinilium — |
| | | | 237 Uuq unbinilium — | 238 Uuq unbinilium — | 239 Uuq unbinilium — | 240 Uuq unbinilium — | 241 Uuq unbinilium — | 242 Uuq unbinilium — | 243 Uuq unbinilium — |
| | | | 244 Uuq unbinilium — | 245 Uuq unbinilium — | 246 Uuq unbinilium — | 247 Uuq unbinilium — | 248 Uuq unbinilium — | 249 Uuq unbinilium — | 250 Uuq unbinilium — |
| | | | 251 Uuq unbinilium — | 252 Uuq unbinilium — | 253 Uuq unbinilium — | 254 Uuq unbinilium — | 255 Uuq unbinilium — | 256 Uuq unbinilium — | 257 Uuq unbinilium — |
| | | | 258 Uuq unbinilium — | 259 Uuq unbinilium — | 260 Uuq unbinilium — | 261 Uuq unbinilium — | 262 Uuq unbinilium — | 263 Uuq unbinilium — | 264 Uuq unbinilium — |
| | | | 265 Uuq unbinilium — | 266 Uuq unbinilium — | 267 Uuq unbinilium — | 268 Uuq unbinilium — | 269 Uuq unbinilium — | 270 Uuq unbinilium — | 271 Uuq unbinilium — |
| | | | 272 Uuq unbinilium — | 273 Uuq unbinilium — | 274 Uuq unbinilium — | 275 Uuq unbinilium — | 276 Uuq unbinilium — | 277 Uuq unbinilium — | 278 Uuq unbinilium — |
| | | | 279 Uuq unbinilium — | 280 Uuq unbinilium — | 281 Uuq unbinilium — | 282 Uuq unbinilium — | 283 Uuq unbinilium — | 284 Uuq unbinilium — | 285 Uuq unbinilium — |
| | | | 286 Uuq unbinilium — | 287 Uuq unbinilium — | 288 Uuq unbinilium — | 289 Uuq unbinilium — | 290 Uuq unbinilium — | 291 Uuq unbinilium — | 292 Uuq unbinilium — |
| | | | 293 Uuq unbinilium — | 294 Uuq unbinilium — | 295 Uuq unbinilium — | 296 Uuq unbinilium — | 297 Uuq unbinilium — | 298 Uuq unbinilium — | 299 Uuq unbinilium — |
| | | | 300 Uuq unbinilium — | 301 Uuq unbinilium — | 302 Uuq unbinilium — | 303 Uuq unbinilium — | 304 Uuq unbinilium — | 305 Uuq unbinilium — | 306 Uuq unbinilium — |
| | | | 307 Uuq unbinilium — | 308 Uuq unbinilium — | 309 Uuq unbinilium — | 310 Uuq unbinilium — | 311 Uuq unbinilium — | 312 Uuq unbinilium — | 313 Uuq unbinilium — |
| | | | 314 Uuq unbinilium — | 315 Uuq unbinilium — | 316 Uuq unbinilium — | 317 Uuq unbinilium — | 318 Uuq unbinilium — | 319 Uuq unbinilium — | 320 Uuq unbinilium — |
| | | | 321 Uuq unbinilium — | 322 Uuq unbinilium — | 323 Uuq unbinilium — | 324 Uuq unbinilium — | 325 Uuq unbinilium — | 326 Uuq unbinilium — | 327 Uuq unbinilium — |
| | | | 328 Uuq unbinilium — | 329 Uuq unbinilium — | 330 Uuq unbinilium — | 331 Uuq unbinilium — | 332 Uuq unbinilium — | 333 Uuq unbinilium — | 334 Uuq unbinilium — |
| | | | 335 Uuq unbinilium — | 336 Uuq unbinilium — | 337 Uuq unbinilium — | 338 Uuq unbinilium — | 339 Uuq unbinilium — | 340 Uuq unbinilium — | 341 Uuq unbinilium — |
| | | | 342 Uuq unbinilium — | 343 Uuq unbinilium — | 344 Uuq unbinilium — | 345 Uuq unbinilium — | 346 Uuq unbinilium — | 347 Uuq unbinilium — | 348 Uuq unbinilium — |
| | | | 349 Uuq unbinilium — | 350 Uuq unbinilium — | 351 Uuq unbinilium — | 352 Uuq unbinilium — | 353 Uuq unbinilium — | 354 Uuq unbinilium — | 355 Uuq unbinilium — |
| | | | 356 Uuq unbinilium — | 357 Uuq unbinilium — | 358 Uuq unbinilium — | 359 Uuq unbinilium — | 360 Uuq unbinilium — | 361 Uuq unbinilium — | 362 Uuq unbinilium — |
| | | | 363 Uuq unbinilium — | 364 Uuq unbinilium — | 365 Uuq unbinilium — | 366 Uuq unbinilium — | 367 Uuq unbinilium — | 368 Uuq unbinilium — | 369 Uuq unbinilium — |
| | | | 370 Uuq unbinilium — | 371 Uuq unbinilium — | 372 Uuq unbinilium — | 373 Uuq unbinilium — | 374 Uuq unbinilium — | 375 Uuq unbinilium — | 376 Uuq unbinilium — |
| | | | 377 Uuq unbinilium — | 378 Uuq unbinilium — | 379 Uuq unbinilium — | 380 Uuq unbinilium — | 381 Uuq unbinilium — | 382 Uuq unbinilium — | 383 Uuq unbinilium — |
| | | | 384 Uuq unbinilium — | 385 Uuq unbinilium — | 386 Uuq unbinilium — | 387 Uuq unbinilium — | 388 Uuq unbinilium — | 389 Uuq unbinilium — | 390 Uuq unbinilium — |
| | | | 391 Uuq unbinilium — | 392 Uuq unbinilium — | 393 Uuq unbinilium — | 394 Uuq unbinilium — | 395 Uuq unbinilium — | 396 Uuq unbinilium — | 397 Uuq unbinilium — |
| | | | 398 Uuq unbinilium — | 399 Uuq unbinilium — | 400 Uuq unbinilium — | 401 Uuq unbinilium — | 402 Uuq unbinilium — | 403 Uuq unbinilium — | 404 Uuq unbinilium — |
| | | | 405 Uuq unbinilium — | 406 Uuq unbinilium — | 407 Uuq unbinilium — | 408 Uuq unbinilium — | 409 Uuq unbinilium — | 410 Uuq unbinilium — | 411 Uuq unbinilium — |
| | | | 412 Uuq unbinilium — | 413 Uuq unbinilium — | 414 Uuq unbinilium — | 415 Uuq unbinilium — | 416 Uuq unbinilium — | 417 Uuq unbinilium — | 418 Uuq unbinilium — |
| | | | 419 Uuq unbinilium — | 420 Uuq unbinilium — | 421 Uuq unbinilium — | 422 Uuq unbinilium — | 423 Uuq unbinilium — | 424 Uuq unbinilium — | 425 Uuq unbinilium — |
| | | | 426 Uuq unbinilium — | 427 Uuq unbinilium — | 428 Uuq unbinilium — | 429 Uuq unbinilium — | 430 Uuq unbinilium — | 431 Uuq unbinilium — | 432 Uuq unbinilium — |
| | | | 433 Uuq unbinilium — | 434 Uuq unbinilium — | 435 Uuq unbinilium — | 436 Uuq unbinilium — | 437 Uuq unbinilium — | 438 Uuq unbinilium — | 439 Uuq unbinilium — |
| | | | 440 Uuq unbinilium — | 441 Uuq unbinilium — | 442 Uuq unbinilium — | 443 Uuq unbinilium — | 444 Uuq unbinilium — | 445 Uuq unbinilium — | 446 Uuq unbinilium — |
| | | | 447 Uuq unbinilium — | 448 Uuq unbinilium — | 449 Uuq unbinilium — | 450 Uuq unbinilium — | 451 Uuq unbinilium — | 452 Uuq unbinilium — | 453 Uuq unbinilium — |
| | | | 454 Uuq unbinilium — | 455 Uuq unbinilium — | 456 Uuq unbinilium — | 457 Uuq unbinilium — | 458 Uuq unbinilium — | 459 Uuq unbinilium — | 460 Uuq unbinilium — |
| | | | 461 Uuq unbinilium — | 462 Uuq unbinilium — | 463 Uuq unbinilium — | 464 Uuq unbinilium — | 465 Uuq unbinilium — | 466 Uuq unbinilium — | 467 Uuq unbinilium — |
| | | | 468 Uuq unbinilium — | 469 Uuq unbinilium — | 470 Uuq unbinilium — | 471 Uuq unbinilium — | 472 Uuq unbinilium — | 473 Uuq unbinilium — | 474 Uuq unbinilium — |
| | | | 475 Uuq unbinilium — | 476 Uuq unbinilium — | 477 Uuq unbinilium — | 478 Uuq unbinilium — | 479 Uuq unbinilium — | 480 Uuq unbinilium — | 481 Uuq unbinilium — |
| | | | 482 Uuq unbinilium — | 483 Uuq unbinilium — | 484 Uuq unbinilium — | 485 Uuq unbinilium — | 486 Uuq unbinilium — | 487 Uuq unbinilium — | 488 Uuq unbinilium — |
| | | | 489 Uuq unbinilium — | 490 Uuq unbinilium — | 491 Uuq unbinilium — | 492 Uuq unbinilium — | 493 Uuq unbinilium — | 494 Uuq unbinilium — | 495 Uuq unbinilium — |
| | | | 496 Uuq unbinilium — | 497 Uuq unbinilium — | 498 Uuq unbinilium — | 499 Uuq unbinilium — | 500 Uuq unbinilium — | 501 Uuq unbinilium — | 502 Uuq unbinilium — |
| | | | 503 Uuq unbinilium — | 504 Uuq unbinilium — | 505 Uuq unbinilium — | 506 Uuq unbinilium — | 507 Uuq unbinilium — | 508 Uuq unbinilium — | 509 Uuq unbinilium — |
| | | | 510 Uuq unbinilium — | 511 Uuq unbinilium — | 512 Uuq unbinilium — | 513 Uuq unbinilium — | 514 Uuq unbinilium — | 515 Uuq unbinilium — | 516 Uuq unbinilium — |
| | | | 517 Uuq unbinilium — | 518 Uuq unbinilium — | 519 Uuq unbinilium — | 520 Uuq unbinilium — | 521 Uuq unbinilium — | 522 Uuq unbinilium — | 523 Uuq unbinilium — |
| | | | 524 Uuq unbinilium — | 525 Uuq unbinilium — | 526 Uuq unbinilium — | 527 Uuq unbinilium — | 528 Uuq unbinilium — | 529 Uuq | |